

## Kerdiffstown Site Update 14.07.22 - Directional Drilling:

### Directional Drilling:

As part of the works, it is planned to install pipes connecting an infrastructure compound within the Kerdiffstown site to Johnstown Pumping Station. This is to be achieved by directional drilling under the L2005, the N7 and the Morell River. Refer to Fig 1 below for the location of the works.

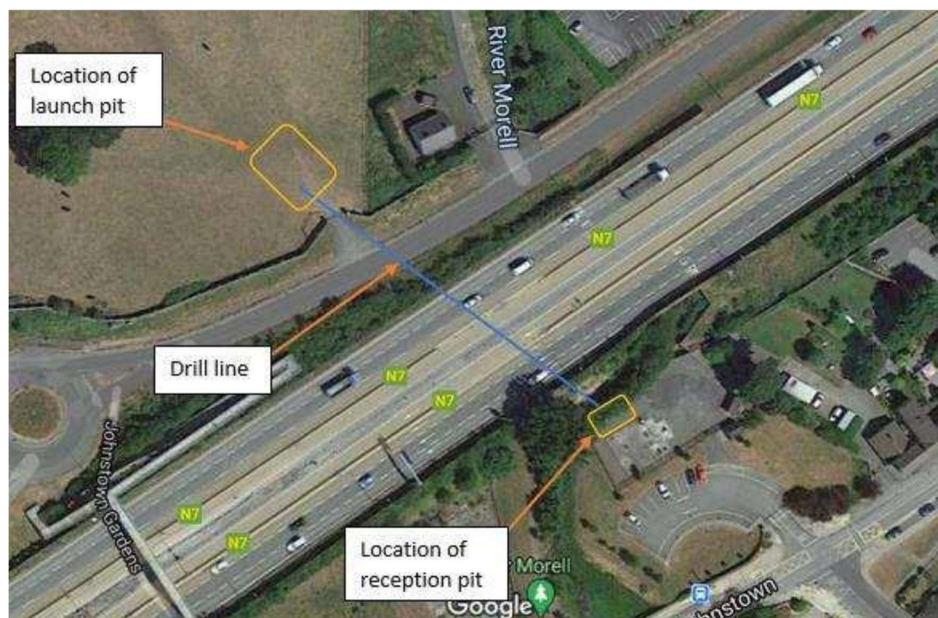


FIG 1: Location of Works

Some of the more visually obvious works taking place will be the excavation of the drilling launch pit on the Kerdiffstown side of the N7. This excavation must accommodate the drilling rig allowing it to drill under the roads and river at the required depth for the pipes to reach a smaller reception pit located in the grounds of Johnstown Pumping Station. From this location the pipes will be connected to the Pumping Station.

The drilling exercise itself was expected to take approximately 1 week and drilling commenced in early June. Difficult ground conditions have delayed the works which are still ongoing.

On completion of the drilling works there will be connection works at the pumping station and reinstatement of the launch and receiving pits.

KCC appreciate your patience during the course of these works and if you have any questions or concerns, please don't hesitate to contact a member of the team on the contact details below.

### Kildare County Council Kerdiffstown contact details:

Noel Beggan

Tel: 086 8288192

Email: [nbeggan@kildarecoco.ie](mailto:nbeggan@kildarecoco.ie)

Ultan Downes

Tel: 087 9559494

Email: [udownes@kildarecoco.ie](mailto:udownes@kildarecoco.ie)